

CUNY iPad Set-Up

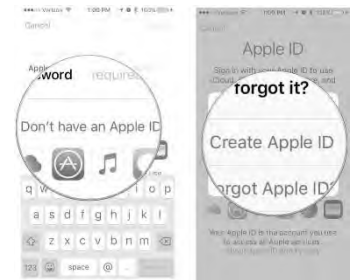
Getting Started

1. Press and hold the device's power button on top until you see the Apple logo. You'll then see "Hello" in many languages. Follow the steps to get started.
2. Choose your language and country/region.
3. Choose your Wi-Fi network and type in the password.
4. You'll be asked to set up a six-digit passcode as well as the Touch ID with the iPad's fingerprint reader.



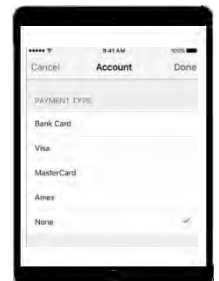
Apple ID

1. To sign in:
 - a. If you have an existing Apple ID, you can use it to sign in.
 - b. If you don't have an existing Apple ID, tap on "Don't have an Apple ID or forgot it?" and go through the steps to create a new one.
2. You will have to agree to Apple's Terms and Conditions to proceed. Tap twice to proceed.



App Store

1. The first time you go to the App Store to install an application, the App Store will request that you update your Account information.
2. Once prompted for payment information, you can select 'None' at this screen.
3. You will need to input your address as a billing address even if you do not associate a credit card with your Apple ID.



Note: If you do not associate a credit card with your Apple ID, you will still be able to “purchase” free applications and redeem both gift cards and application redemption codes.

Resources

Instructions for setting up Blackboard, Getting BB after Hours support, Office 365, Dropbox and other resources are available on the CUNY Loaner Support Website– <https://www.cuny.edu/loaners>

Apple iPad Support Website - <https://support.apple.com/guide/ipad/welcome/ipados>



Loaner Agreement Rules and Guidance

Device Security

- All use must comply with CUNY policies, including the Acceptable Use of Computer Resources policy.
- Do not leave your device in a vehicle.
- Do not loan your device to anyone.
- Each device has an identifying barcode label placed there by CUNY. Under no circumstances should you modify, remove or destroy these labels.
- You must immediately report lost or stolen equipment to the college IT department, and to college Public Safety, if instructed to do so.

Information Security

- Do not leave your device unsecured.
- Do not store personal information (about yourself or others) on the device. Use CUNY-provided cloud storage or USB storage for all of your files.
- Do not share your password with anyone. You are responsible for your individual accounts.
- All copyright issues regarding software, information, and attributions of authorship must be respected.

Device Care

Important note – this device is CUNY property.

- Do not write, draw, paint, place stickers/labels or otherwise deface your device or its case.
- Do not eat or drink while using the device, as liquids and debris may damage the device.
- Do not keep food, drinks, or food wrappers in the same bag as the device.
- Do not use force when inserting or removing cords, cables, and other removable storage.
- Do not expose the device to extreme temperatures (hot or cold), or direct sunlight for extended periods of time, as it will damage the device. If the device has been in a cold environment for a long period of time, let it warm up in room temperature before using it.
- Never put weight on top of the device.